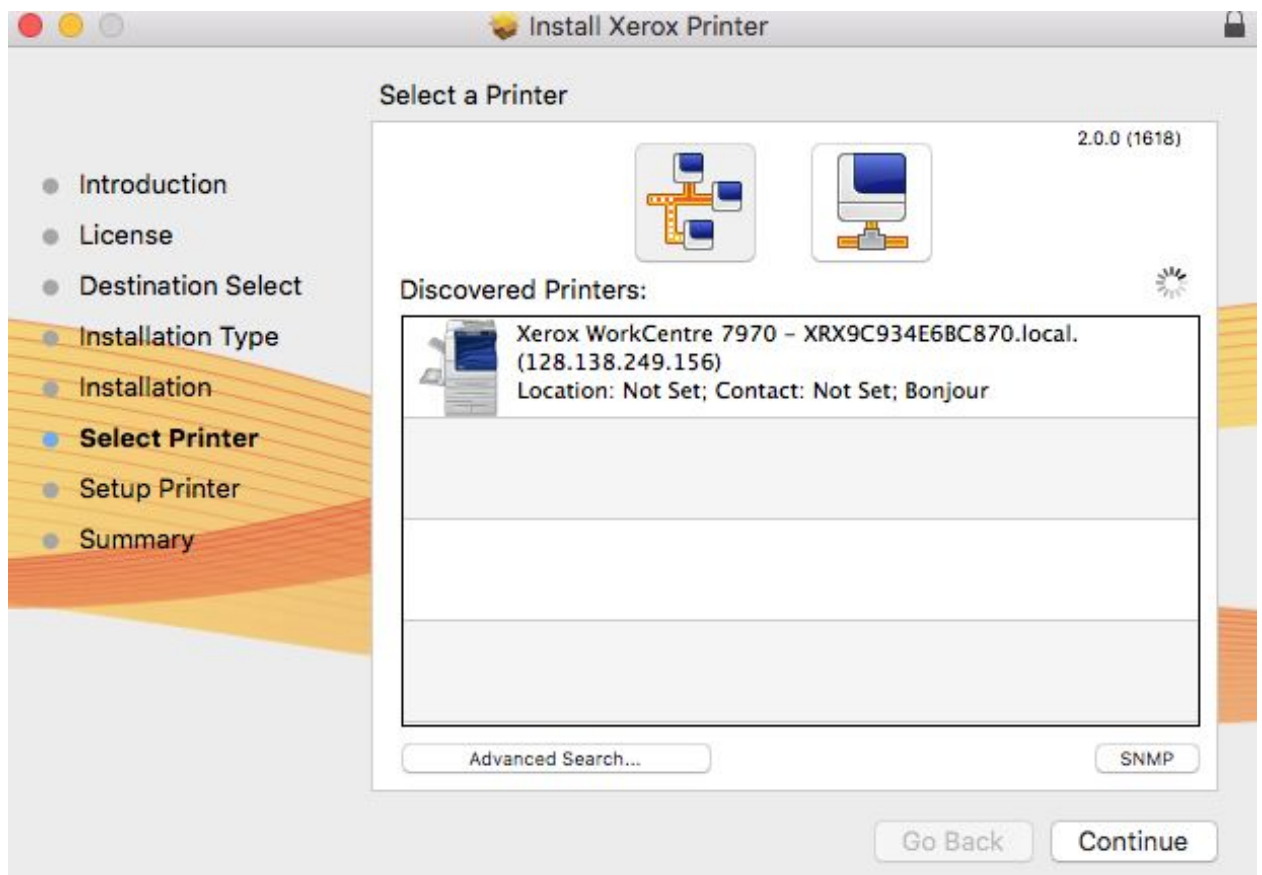
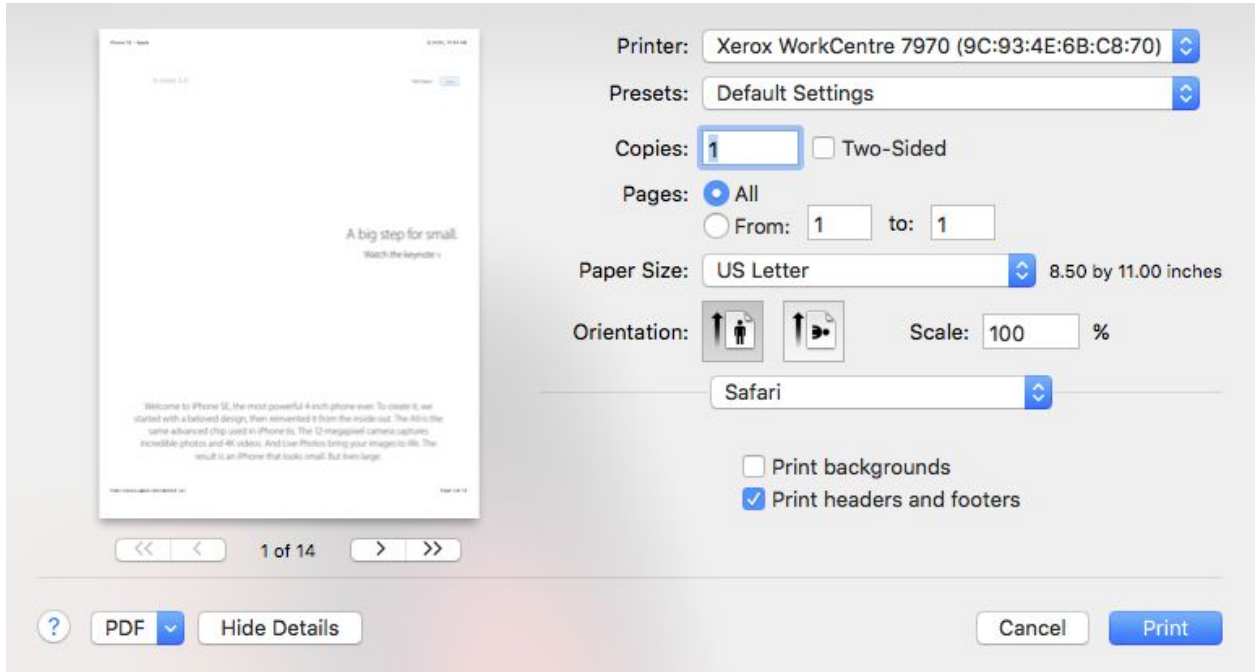


Installing Xerox 7970 print driver for Mac

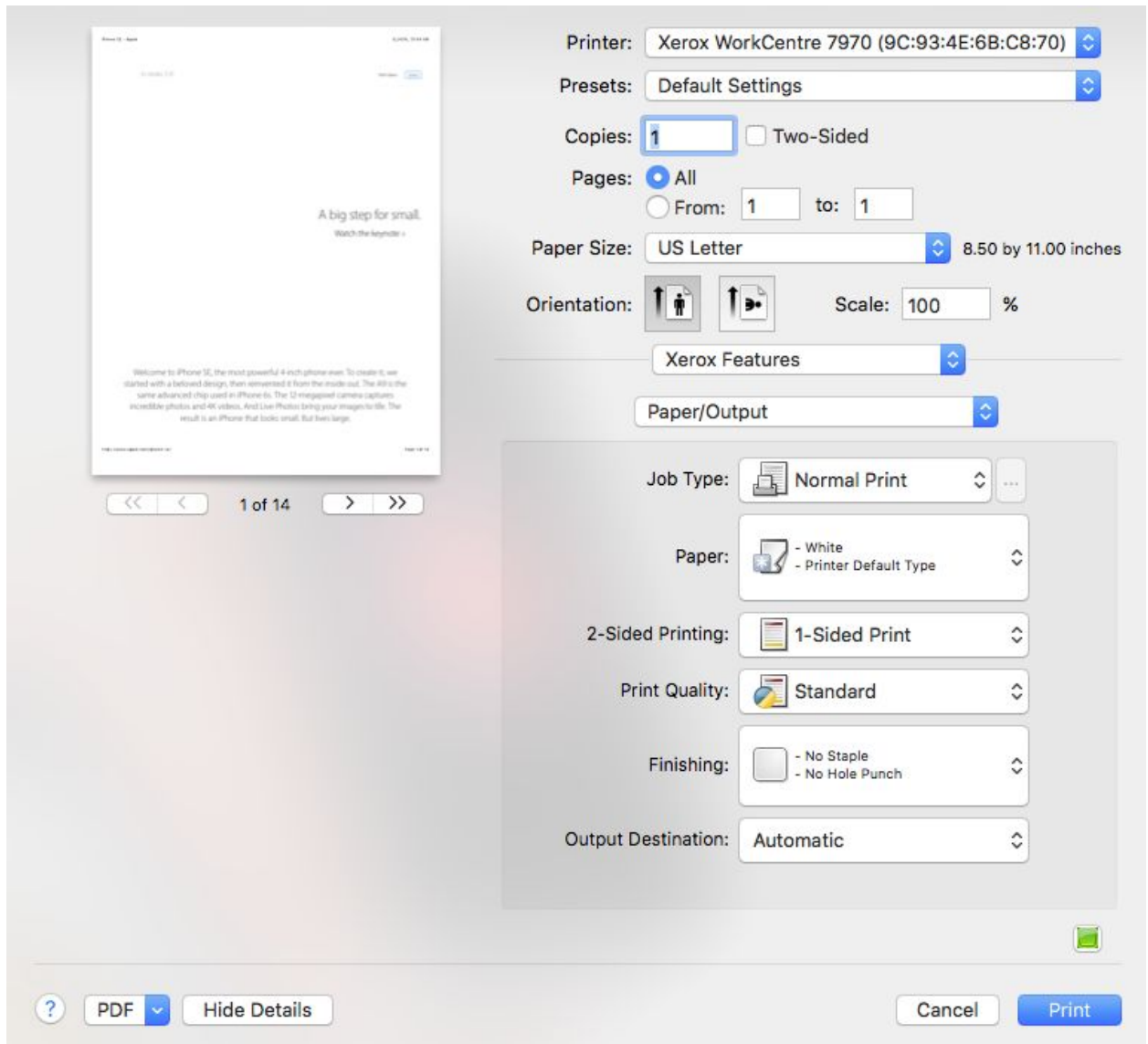
1. Go to http://www.support.xerox.com/support/workcentre-7970/downloads/enus.html?operatingSystem=macOS10_13&fileLanguage=en
2. Select your Mac Operating System in the dropdown menu
3. Locate and download the newest driver ([Mac OS Common Print Driver Installer](#))
4. Click “Accept” to accept the licence agreement
5. Run the .dmg file that was downloaded from the Xerox website
6. Select the default options to install the 7970 driver until you get to the “Select a Printer” prompt
7. Under “Discovered Printers:” select the Xerox WorkCentre 7970 with an IP address of 128.138.249.156 and then click “Continue”
 - a. If the printer is not showing up under Discovered Printers, click on the icon with the single blue and white box and input 128.138.249.156 into the field and click Continue



8. Open a 64bit application such as Chrome, Firefox, or Word and then go to File > Print



9. Every printing screen will be different so you will need to look for the “Xerox Features”



10. Select "Advanced" from the dropdown menu beneath Xerox Features:

The screenshot displays a printer control interface. On the left, a preview of a document page is shown with the text "A big step for small." and "Watch the keynote >". Below the preview are navigation arrows and the text "1 of 14".

On the right, the printer settings are configured as follows:

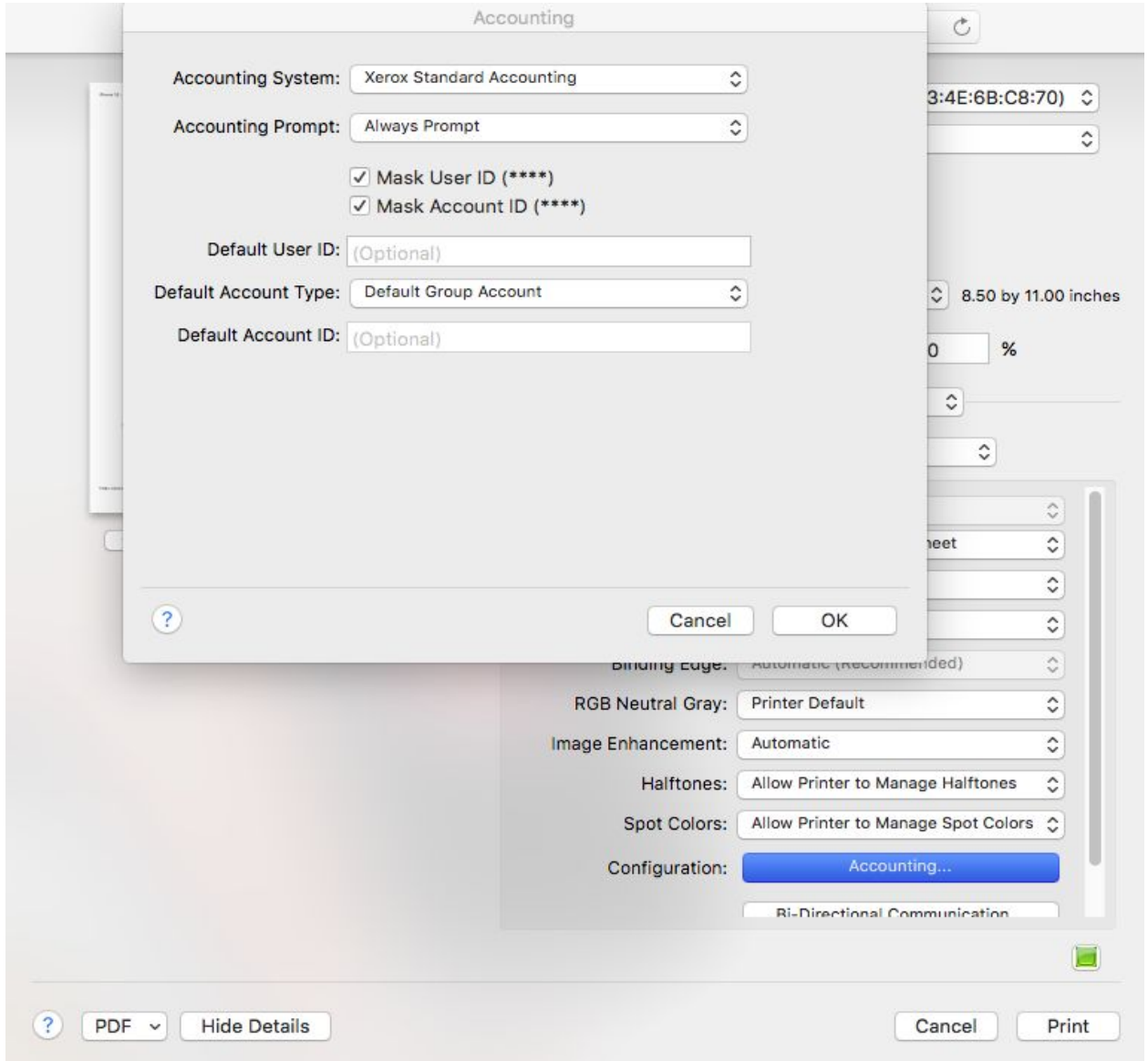
- Printer: Xerox WorkCentre 7970 (9C:93:4E:6B:C8:70)
- Presets: Default Settings
- Copies: 1 (with a "Two-Sided" checkbox that is unchecked)
- Pages: All (with "From: 1" and "to: 1" fields)
- Paper Size: US Letter (8.50 by 11.00 inches)
- Orientation: Portrait (with a "Scale: 100 %" field)
- Xerox Features: Advanced (selected from a dropdown menu)

The "Advanced" Xerox Features menu is expanded, showing the following options:

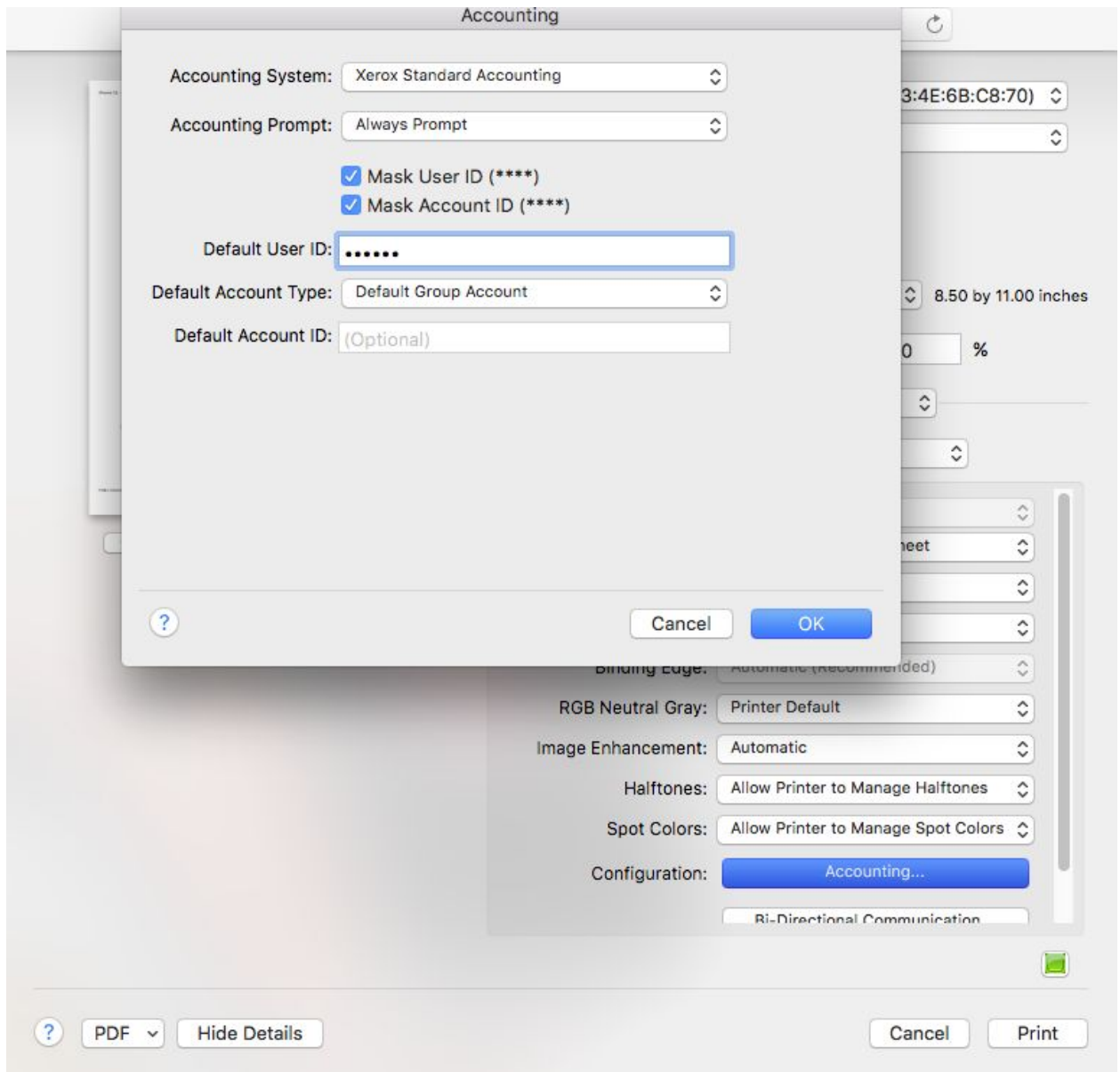
- Booklet Image Order: Left To Right
- Job Identification: Print ID on a Banner Sheet
- Job Offset: Offset Each Set
- Mirrored Output: No
- Binding Edge: Automatic (Recommended)
- RGB Neutral Gray: Printer Default
- Image Enhancement: Automatic
- Halftones: Allow Printer to Manage Halftones
- Spot Colors: Allow Printer to Manage Spot Colors
- Configuration: Accounting... (with a "Bi-Directional Communication" checkbox below it)

At the bottom of the interface, there are buttons for "?", "PDF", "Hide Details", "Cancel", and "Print".

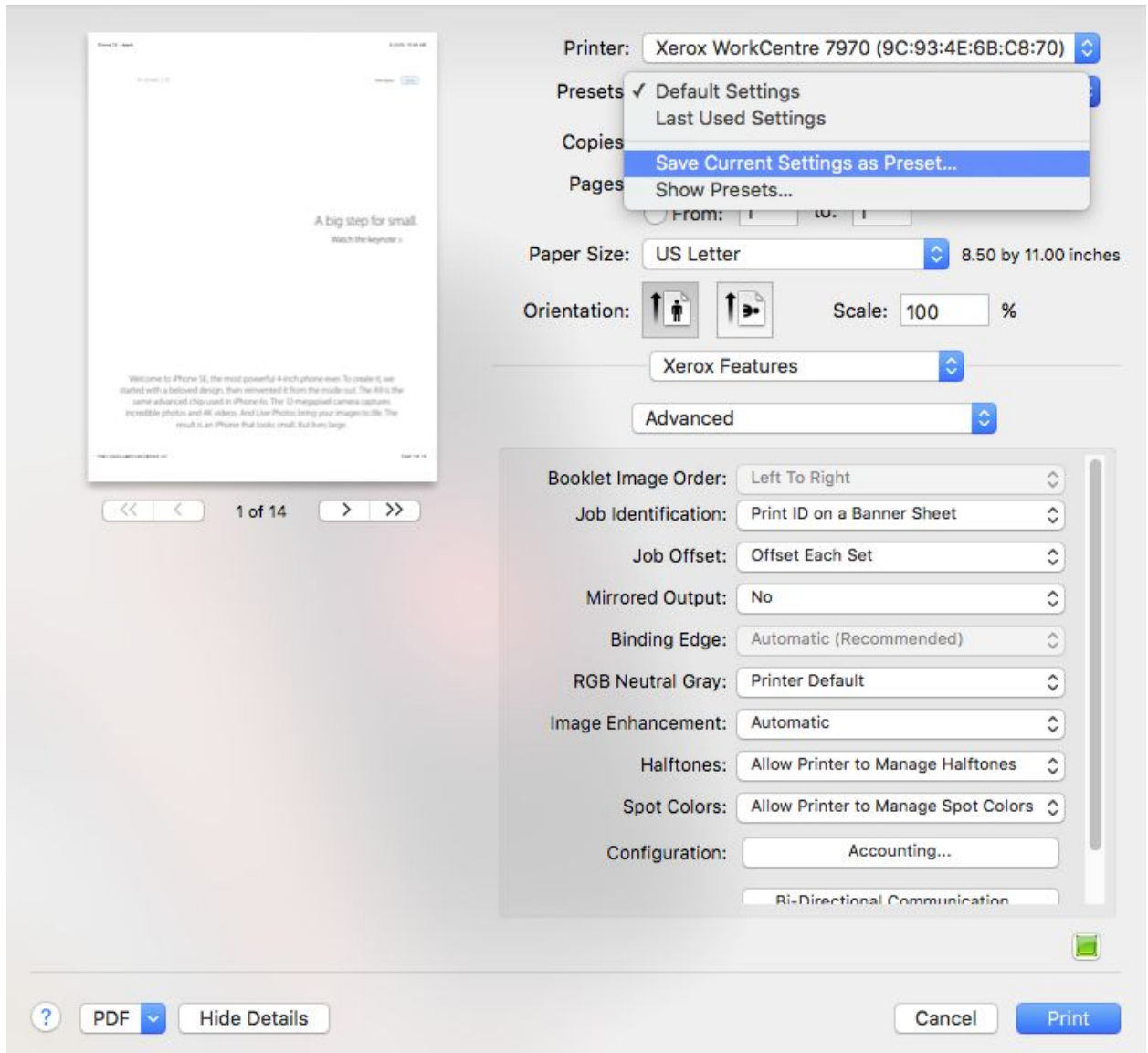
11. In the Advanced menu, select “Accounting...” and for the Accounting System dropdown menu, select Accounting System: “Xerox Standard Accounting”, and Accounting Prompt: “Always Prompt” (Note that the ‘always prompt’ might not work, you may need to select to never prompt.)



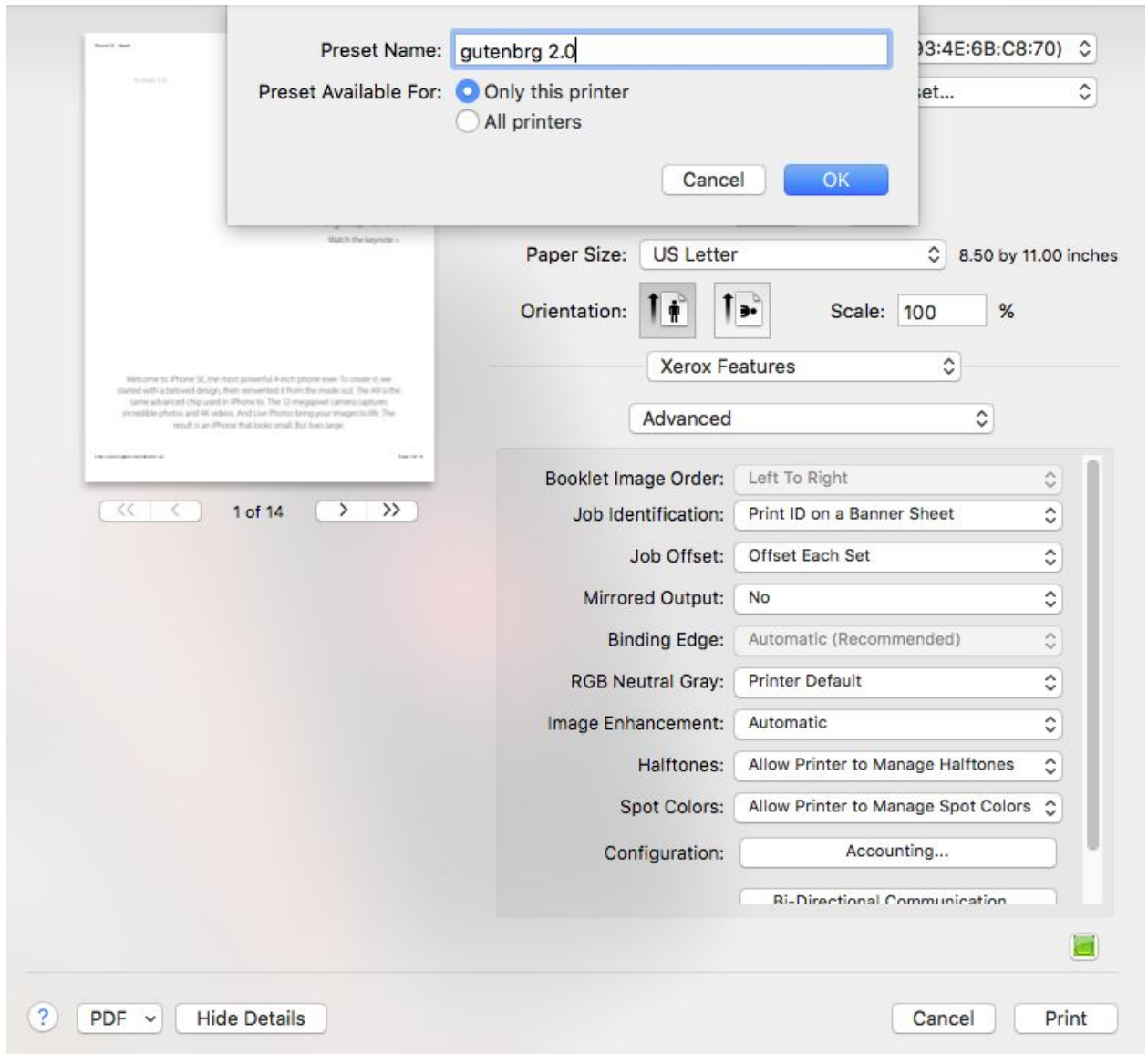
12. In the “Default User ID” section, input your six-digit employee or student ID. Click OK



13. On the “Presets:” dropdown menu, select “Save Current Settings as Preset...”



14. Name the printer something that you will remember and click OK. In my example, I've named it gutenbrg 2.0.



15. Whenever you print, be sure that the preset you've just saved is selected along with the Xerox WorkCentre 7970 Printer selection.