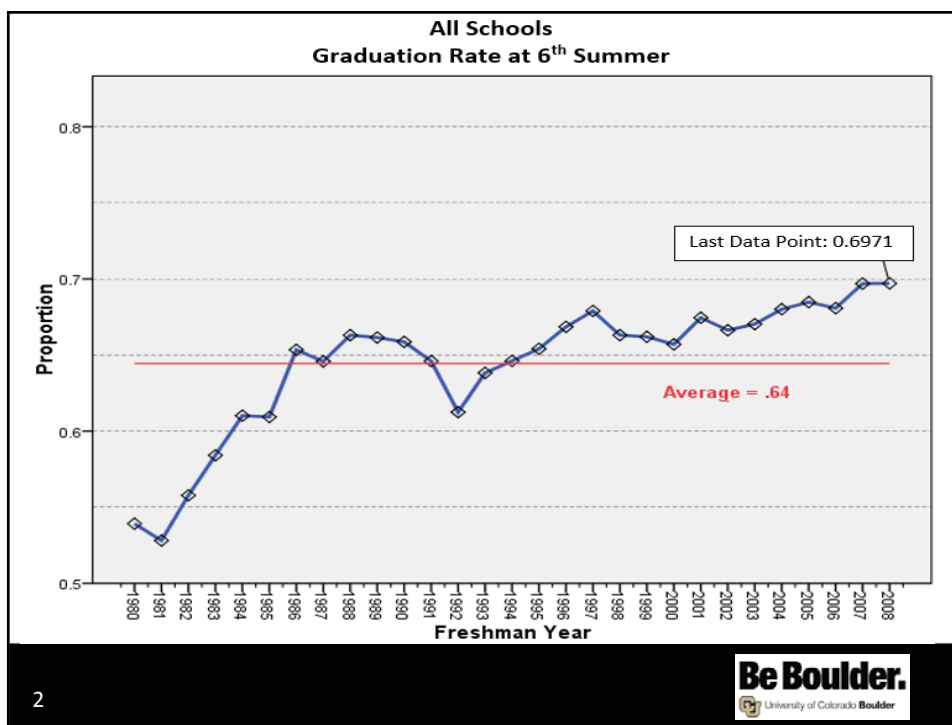




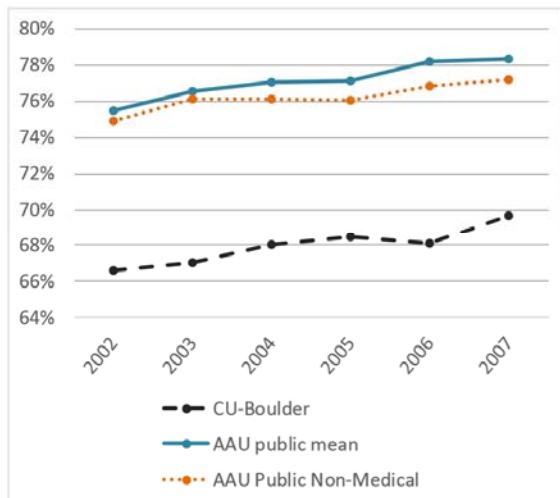
Office for Performance  
Improvement  
UNIVERSITY OF COLORADO BOULDER

# The Current State of Retention & Graduation Rates at the University of Colorado Boulder

*Presentation to the Arts & Sciences Council*



### Six-Year Undergraduate Graduation Rates

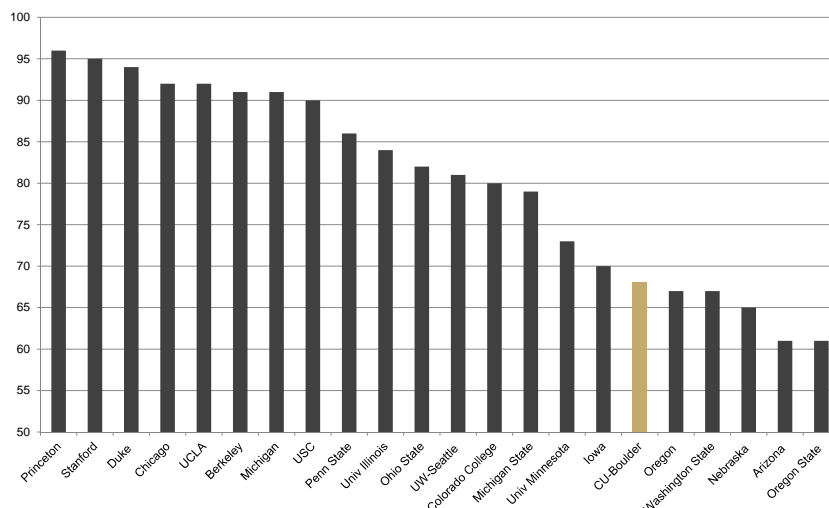


CU-Boulder six-year graduation rates increased from 67% with the 2002 cohort to an all-time high of 70% for the 2007 cohort. All AAU public institutions, including those without a medical school, have seen an increase from 75% with the 2002 cohort to 78% with the 2007 cohort.

3

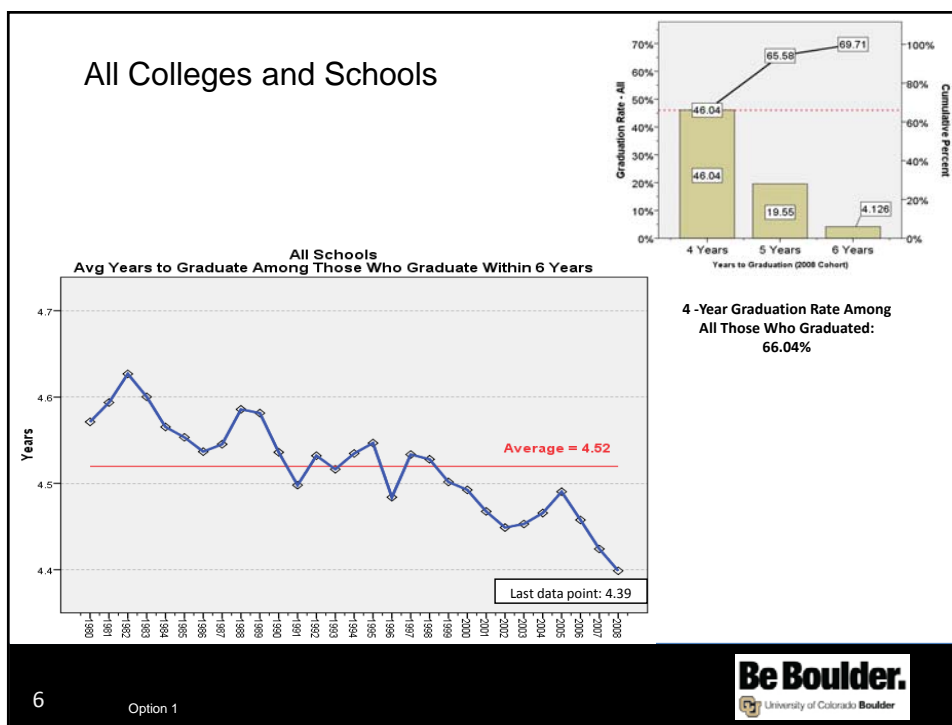
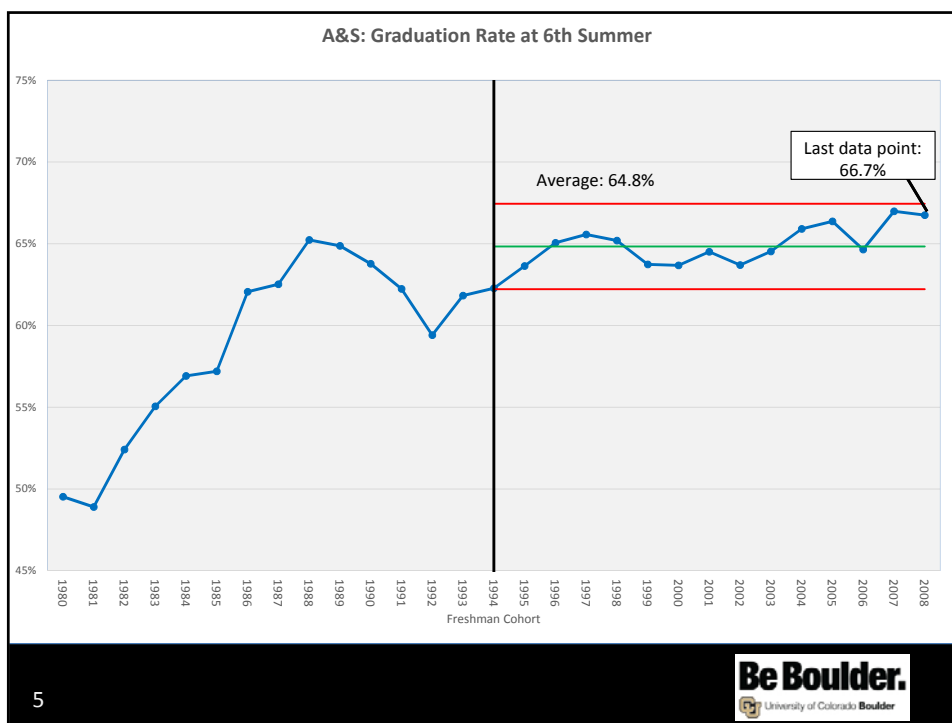


### Six-year graduation rates The White House College Scorecard

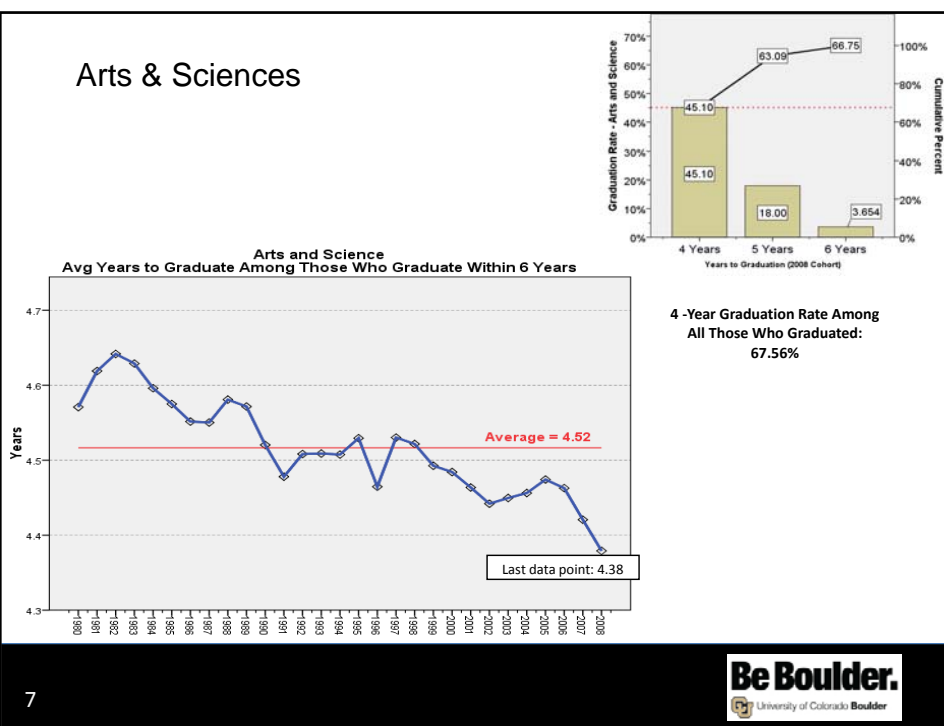


4

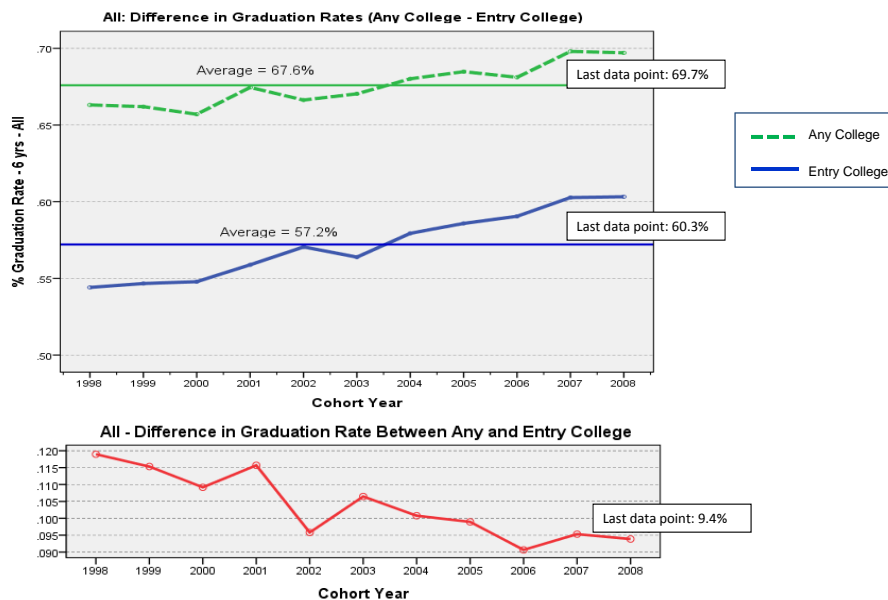




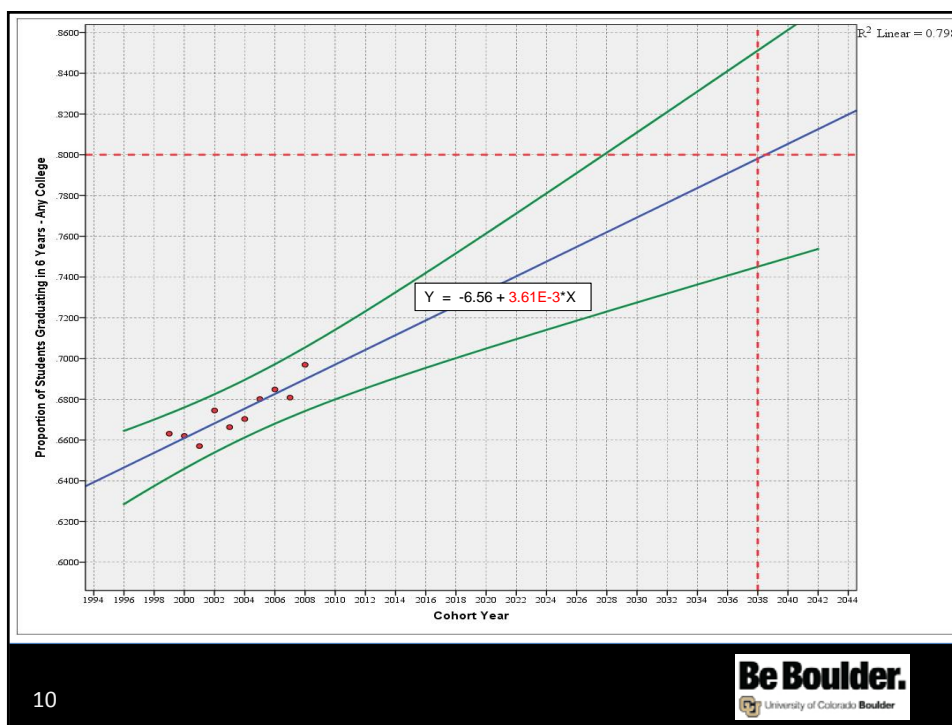
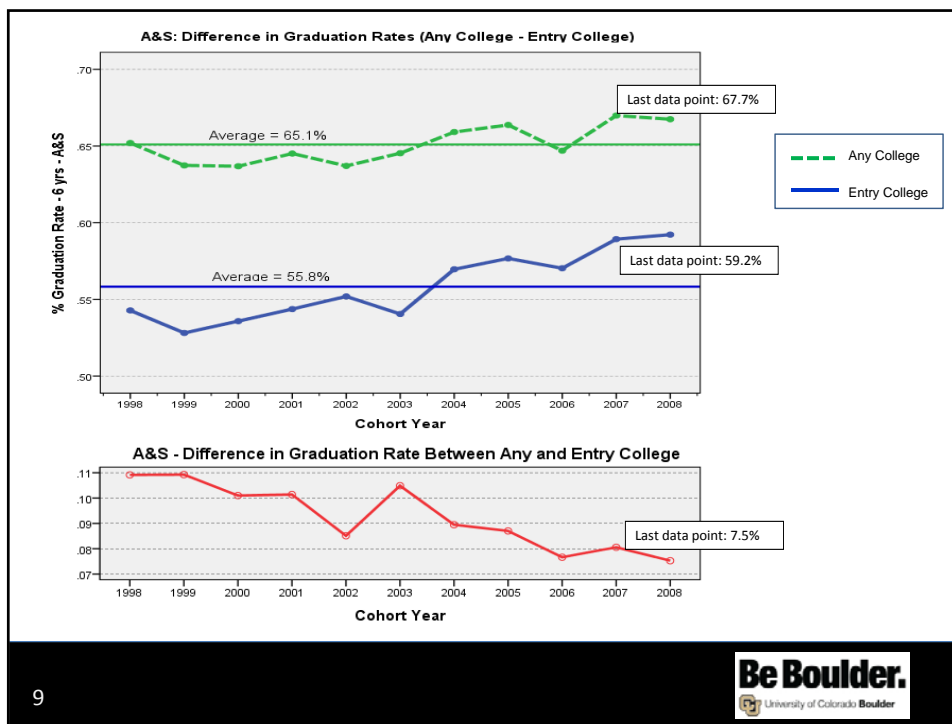
## Arts & Sciences

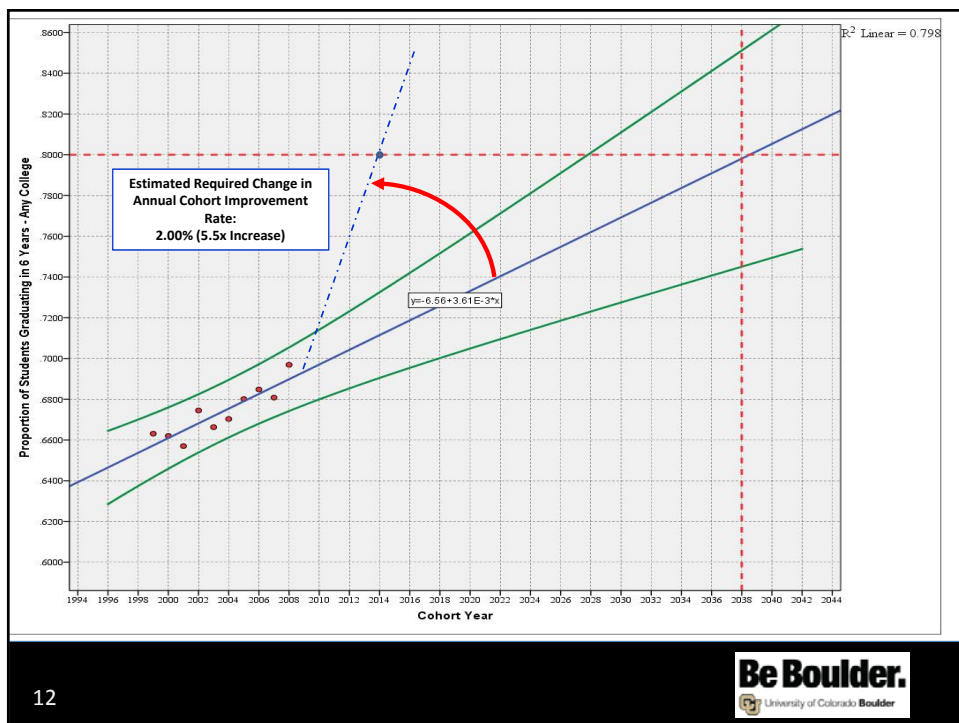
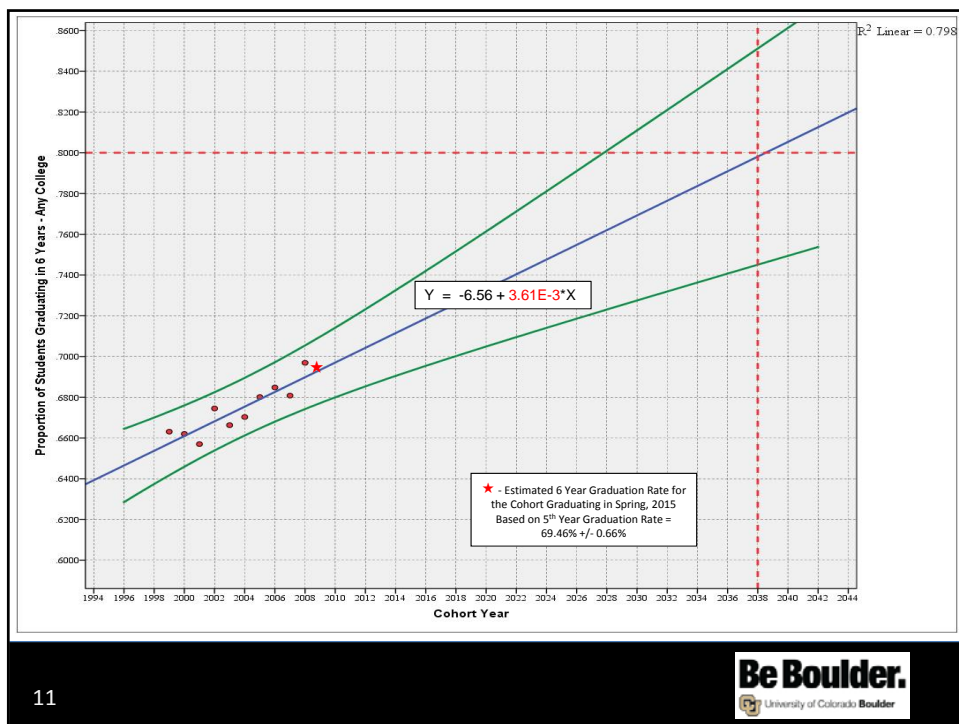


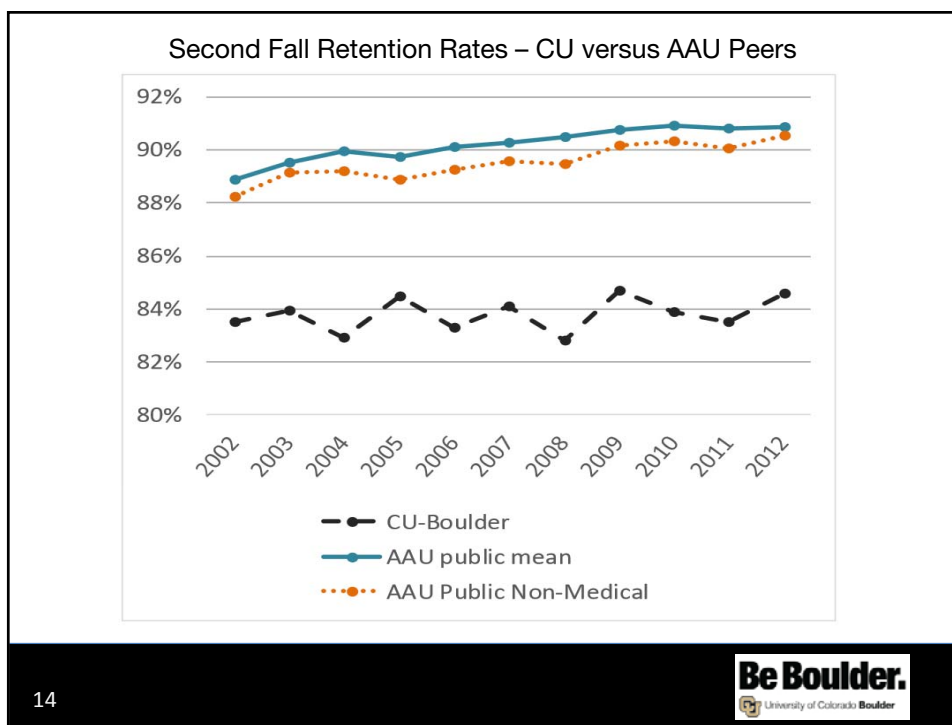
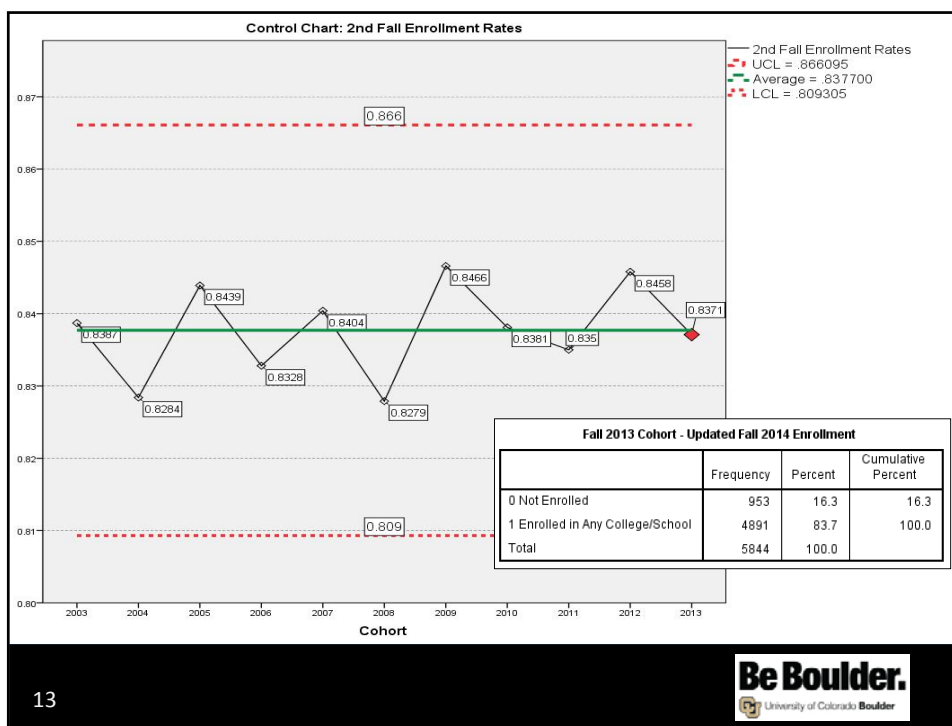
7

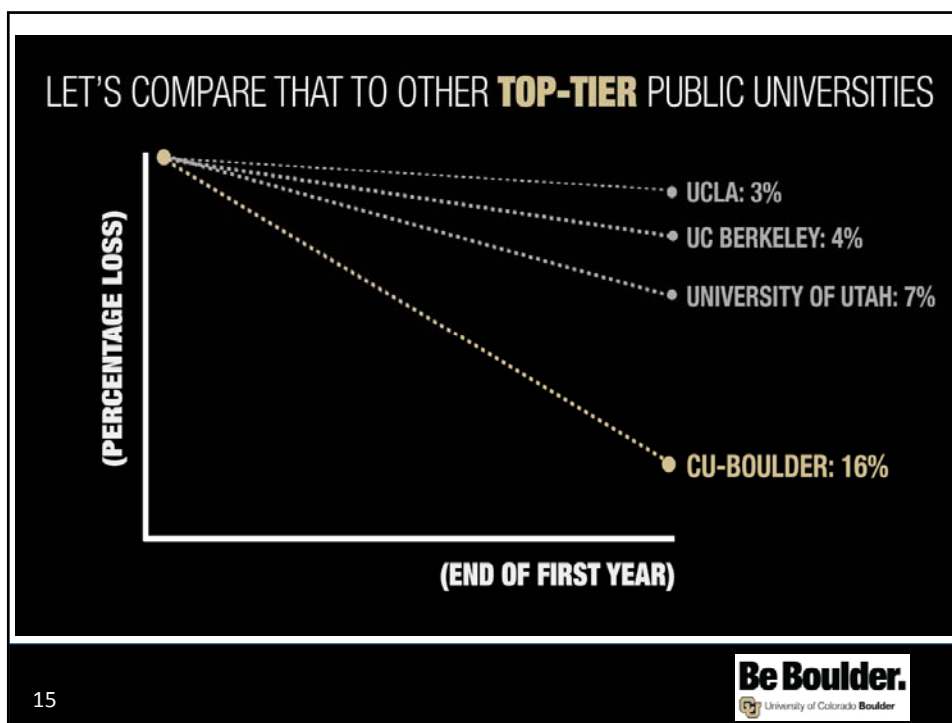


8









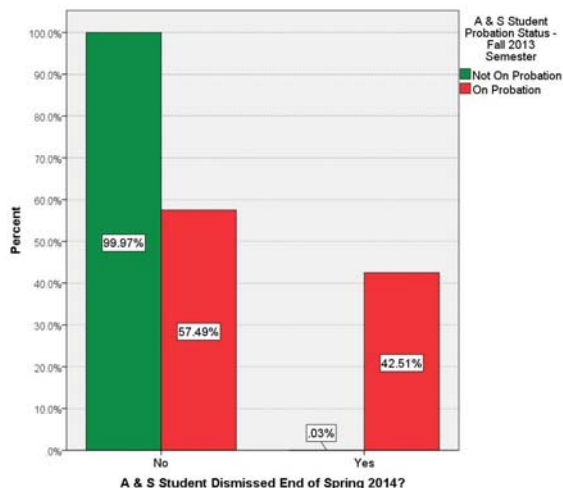
## Arts & Sciences – The Challenge of Academic Probation In the First Academic Year

Fall 2013 Cohort - A & S Students: Probation as a Lead Indicator of Dismissal

			A & S Student - Dismissed End of Spring 2014?		Total
			No	Yes	
A & S Student - Probation Status - End of Fall 2013 Semester	Not On Probation	Count	3310	1	3311
		% within A & S Student Probation Status - End of Fall 2013 Semester	100.0%	0.0%	100.0%
		% within A & S Student Dismissed End of Spring 2014?	89.2%	0.3%	82.7%
	On Probation	Count	399	295	694
		% within A & S Student Probation Status - End of Fall 2013 Semester	57.5%	42.5%	100.0%
		% within A & S Student Dismissed End of Spring 2014?	10.8%	99.7%	17.3%
Total	Count	3709	296	4005	
	% within A & S Student Probation Status - End of Fall 2013 Semester	92.6%	7.4%	100.0%	
	% within A & S Student Dismissed End of Spring 2014?	100.0%	100.0%	100.0%	



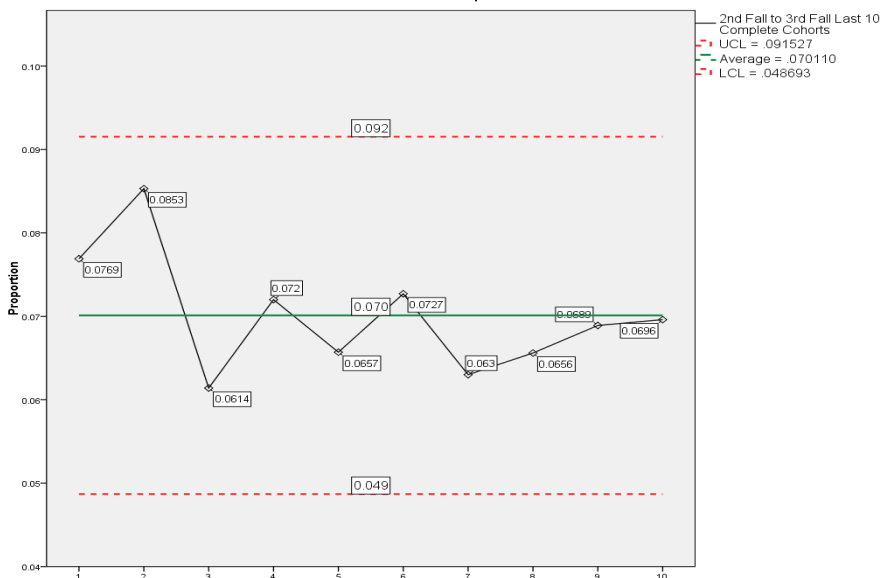
## Arts & Sciences – The Challenge of Academic Probation In the First Academic Year

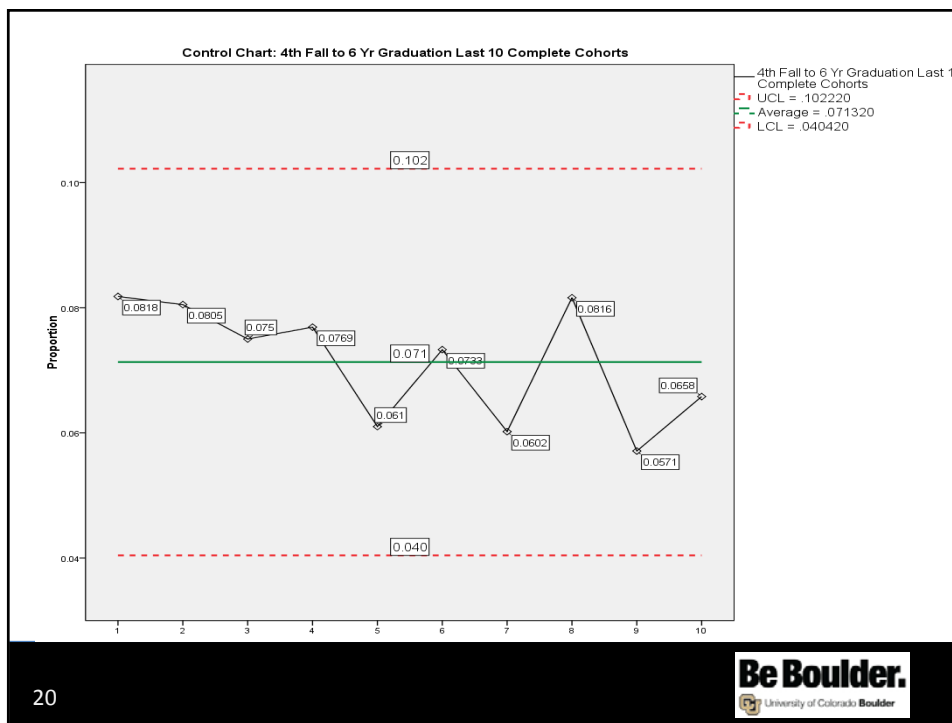
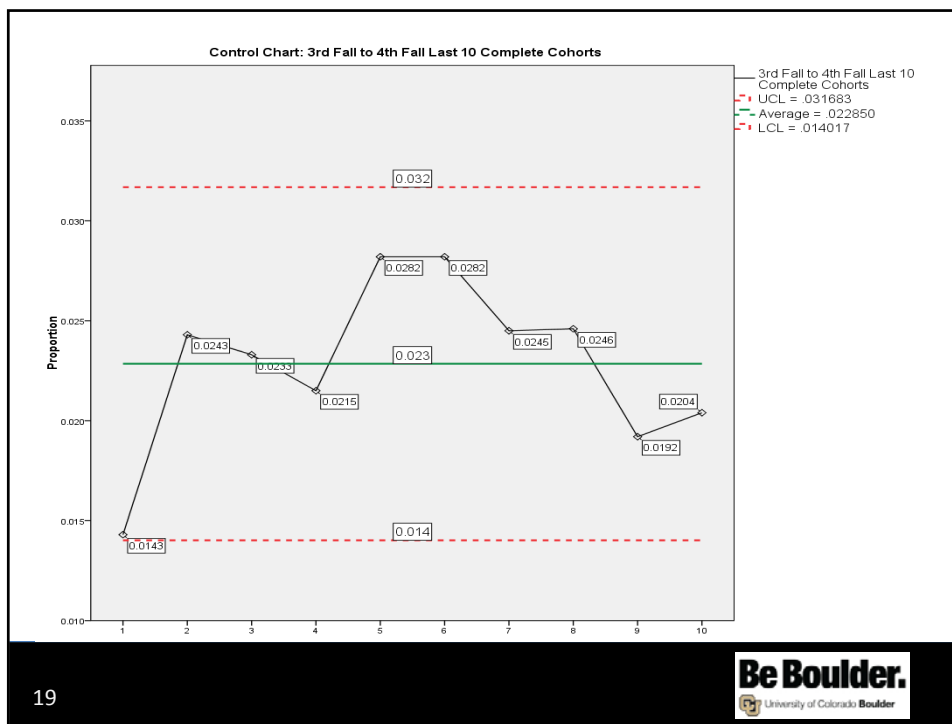


- 68.5% (4005/5844) of the Fall 2013 cohort were A & S students;
- 17.3% (694) of the 4005 students were on academic probation after the Fall 2013 semester;
- 42.5% (295) of these 694 students were dismissed after the Spring 2014 semester;
- These 295 students represent 31% of the 953 students lost from this entire cohort after one academic year.



Control Chart: 2nd Fall to 3rd Fall Last 10 Complete Cohorts





### Preliminary Analysis of Where We Stand with the 2014 Cohort: Retention After One Semester

<b>Fall, 2013 Cohort</b>	<b>Enrolled Spring 2014</b>		
		Frequency	Percent
	No	348	6.0
	Yes	5496	94.0
<b>Fall, 2014 Cohort</b>	<b>Updated Data - Enrolled Spring 2015</b>		
		Frequency	Percent
	No	292	5.0
	Yes	5531	95.0
	Total	5844	100.0
	Total	5823	100.0

21



### Preliminary Analysis of Where We Stand with the 2014 Cohort: Retention After One Semester

<b>Fall, 2013 Cohort</b>				<b>Fall, 2014 Cohort</b>			
<b>Fall, 2013 Cohort - Enrolled Spring, 2014</b>				<b>Fall, 2014 Cohort - Enrolled Spring 2015</b>			
School / College / Program	Frequency	Percent		ACAD_PROG_LD	Frequency	Percent	
Coll Engineering & AppScience	No	26	3.0	Coll Engineering & App Science	No	17	1.9
	Yes	830	97.0		Yes	901	98.1
	Total	856	100.0		Total	918	100.0
College Arts & Sciences	No	260	6.5	College Arts & Sciences	No	243	6.2
	Yes	3745	93.5		Yes	3706	93.8
	Total	4005	100.0		Total	3949	100.0
College of Music	No	2	3.3	College of Music	No	1	2.0
	Yes	58	96.7		Yes	48	98.0
	Total	60	100.0		Total	49	100.0
Leeds School of Business	No	50	7.2	Leeds School of Business	No	22	3.1
	Yes	646	92.8		Yes	696	96.9
	Total	696	100.0		Total	718	100.0
Environmental Design	No	3	3.5	Environmental Design	No	5	6.2
	Yes	83	96.5		Yes	76	93.8
	Total	86	100.0		Total	81	100.0
Journalism & Mass Comm	No	6	7.1	Journalism & Mass Comm	No	4	3.7
	Yes	78	92.9		Yes	104	96.3
	Total	84	100.0		Total	108	100.0

22



## Responses to Additional Questions Submitted for Today's Session

- What Are the Academic Indicators That Best Predict Retention (in A & S)? How Do These Predictors Compare With Admission Standards? Is There A Difference Between In-State and Out-of-State Students?

23



## Factors That Best Predict First Semester Probation in A & S

Degree of Influence/Importance	Factor / Variable (Shown in Rank Order of Importance Within Each Row)	Highest Risk Group
Extremely High	H.S. GPA	H.S. GPA $\leq$ 2.96 AND Housing Application Completion Date On or After June 1 <sup>st</sup> Probability on Probation = 62.5%
Very High	Housing Application Completion Date (1) Need Aid (2) Gender (3)	
High	Residency Status (1) Ethnic Group (2)	

24



### Factors That Best Predict Retention After the First Academic Year in A & S

Degree of Influence/Importance	Factor / Variable (Shown in Rank Order of Importance Within Each Row)	Highest Risk Group
Extremely High	<a href="#">H.S. GPA</a>	H.S. GPA $\leq$ 2.96 AND Housing Application Completion Date On or After June 1 <sup>st</sup> Probability Returned = 47.7%
Very High	Housing Application Completion Date (1) First Generation(2) Residency Status (3)	
High	Ethnic Group (1) High School Rank (2) Need Aid / Pell (3)	

25



### Responses to Additional Questions Submitted for Today's Session

- What Are the Academic Indicators That Best Predict Retention (in A & S)? How Do These Predictors Compare With Admission Standards? Is There A Difference Between In-State and Out-of-State Students?
- When Students Do Not Return, Is It Due To Economic Factors or Academic Factors?
- What Do We Know About the Relationship Between Advising and Retention?

26

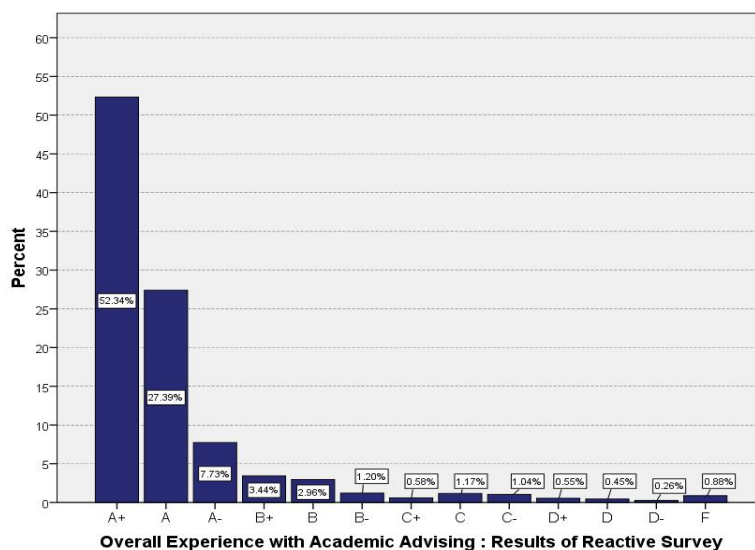


- Research Paper after Research Paper emphasizes that a key persistence factor is the amount of contact undergraduate students have with faculty members, staff members and advisors.
- 52% of the Fall Cohort who did not return after their first academic year had a cumulative GPA of 2.00 or more; 25% of those not returning had a cumulative GPA of 3.00 or more.

27



Student Satisfaction with Advising Meetings



28



## Results of Research On Advising Systems Elsewhere

- A shared advising system in which students are assigned both a departmental, specialty advisor and a centralized, professional advisor
- Centralized advising focuses on 1st year, transfer and open option students
- All advisors report to central administrative unit
- University of Florida:
  - 6 yr Graduation rate 76.5% to 78.4%, 3 years
  - 1st Year Persistence, 91.7 % to 93.4%, 7 years
- Arizona State University:
  - Mid 2000s: 74-76%
  - 2012: 81%
  - "Mainly due to eAdvisor"