



IT Decision Framework

BFA Overview 2024

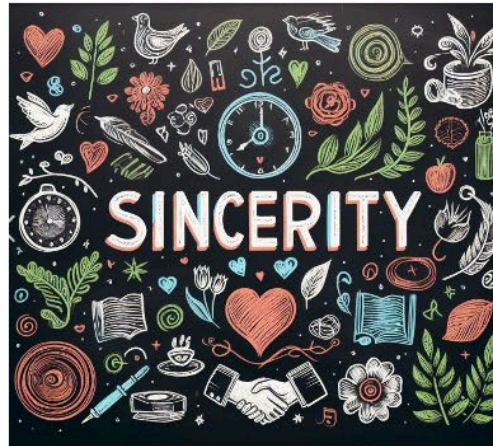
Marin Stanek Ph.D.



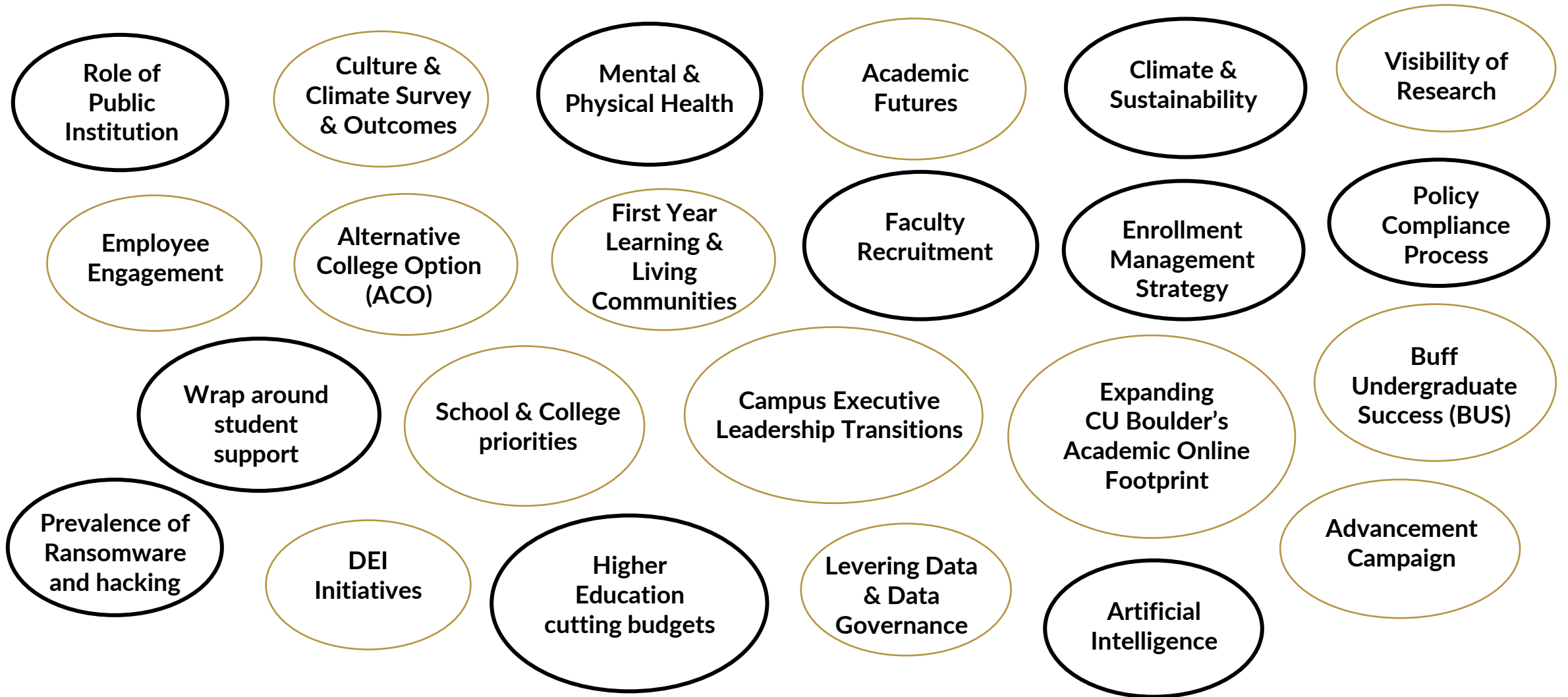
Acknowledgement



=



JUGGLING MULTIPLE PRIORITIES WITHIN THE UNIVERSITY





Historical vs Now



How does this affect me?

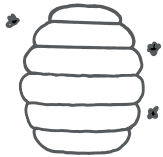
What do I need to do?

Why do I care?

WHY IS AN IT FRAMEWORK NEEDED?

1. Aligns IT strategies with overall institutional academic and research goals
 2. Facilitates effective decision-making through better transparency
 3. Compared to our R1 peers we lag behind
-

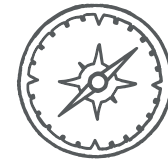
FOSTERING



COLLABORATION



TRANSPARENCY

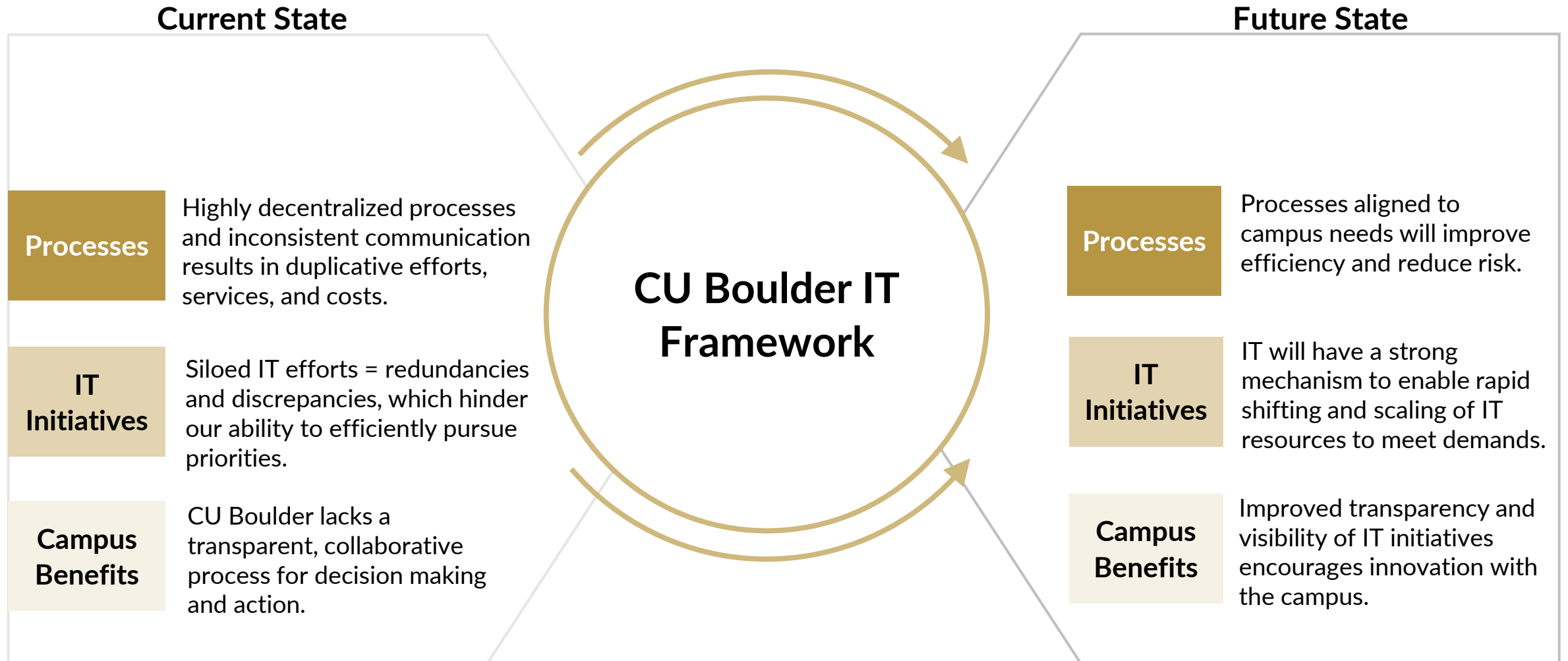


PRIORITIZATION

Because IT services are integrated in everything we do, CU Boulder needs a framework with defined roles and responsibilities that supports effective **collaboration, transparency, and prioritization of IT services** across the University.

TODAY VS. TOMORROW

CU Boulder can deliberately mature processes and structures to drive impact across the campus and system.



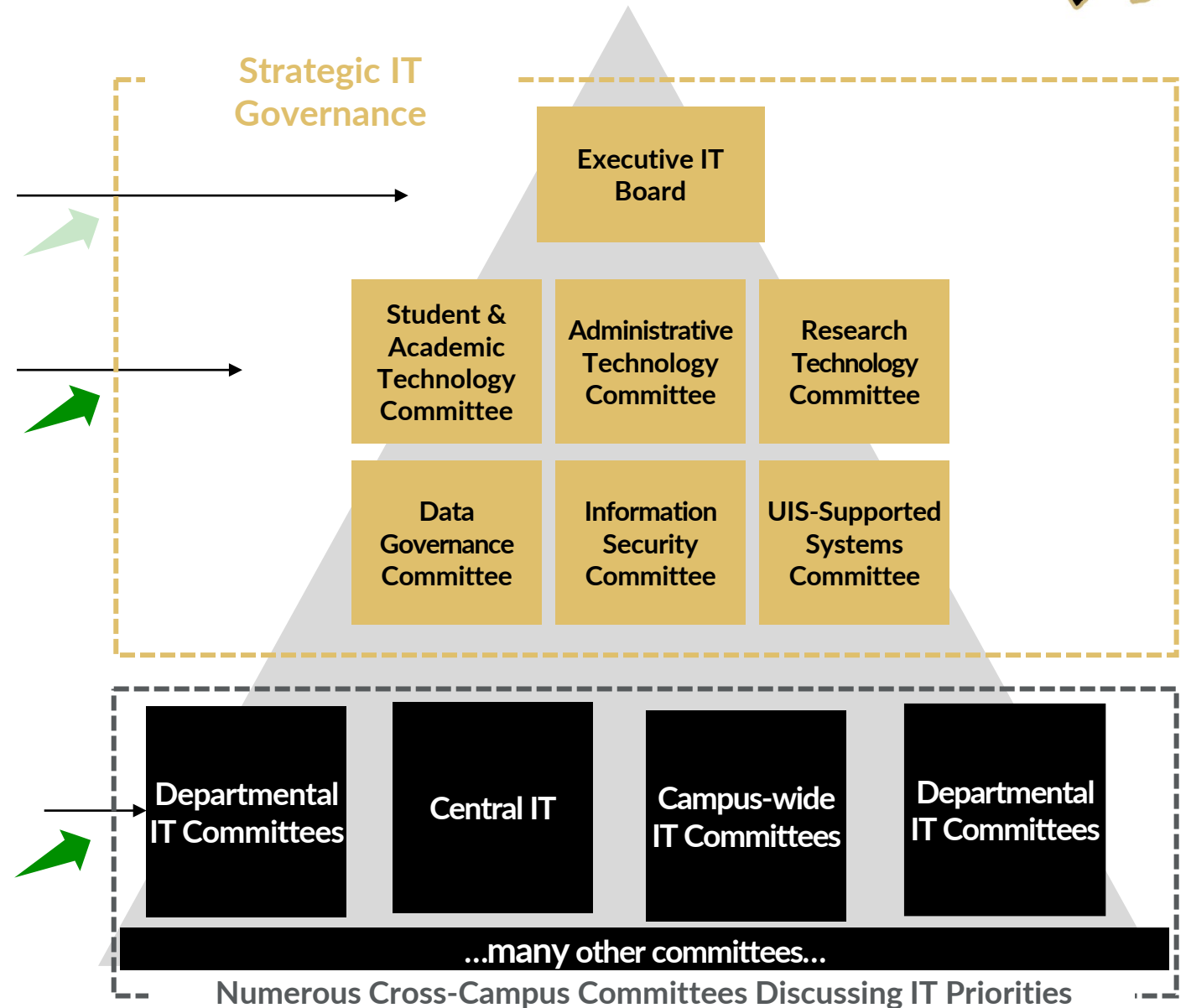


Where are faculty represented?

IT FRAMEWORK

(New) Executive IT Board

(New) Coordinated IT Committees



Existing campus-wide committees and working groups.

ORGANIZATIONAL & OPERATING PRINCIPLES

These core principles guide decisions regarding IT services & support.

INNOVATE WHERE IT MATTERS

Given resource constraints, we are selective on the type of innovations we pursue to maximize impact.

LIMIT REDUNDANCY AND CONTROL IT SPRAWL

We use existing services and technical solutions wherever possible and avoid having multiple solutions that meet the same or similar needs.

UNDERSTAND HIGHER ED LANDSCAPE

We seek to understand technologies, services, and practices that are standard or well accepted in higher education and use them whenever practical.



ACT AS GOOD FINANCIAL STEWARDS

We act as good stewards of financial resources by estimating and documenting the costs of all services, continually evaluating the cost for existing services and asking cost/benefit questions before making a new IT investment.

STRATEGICALLY USE GOVERNANCE

Make strategic IT decisions through coordinated, transparent IT governance practices and processes.

User Experience Matters

Considering the user perspective.

Security is Foundational

Ensures systems and data protected from unauthorized access and use.

Simple & Sustainable

Design solutions that minimize complexity and increase maintainability.

Data is an Asset

Facilitate effective, efficient, and secure consumption of data across campus.

Maximize Interoperability

Design systems for interoperability for data to drive sustainable & scalable operations.

Prioritize Automation

Replace manual processes with automation to reduce waste.

Questions, Comments, Feedback?

Thank You!