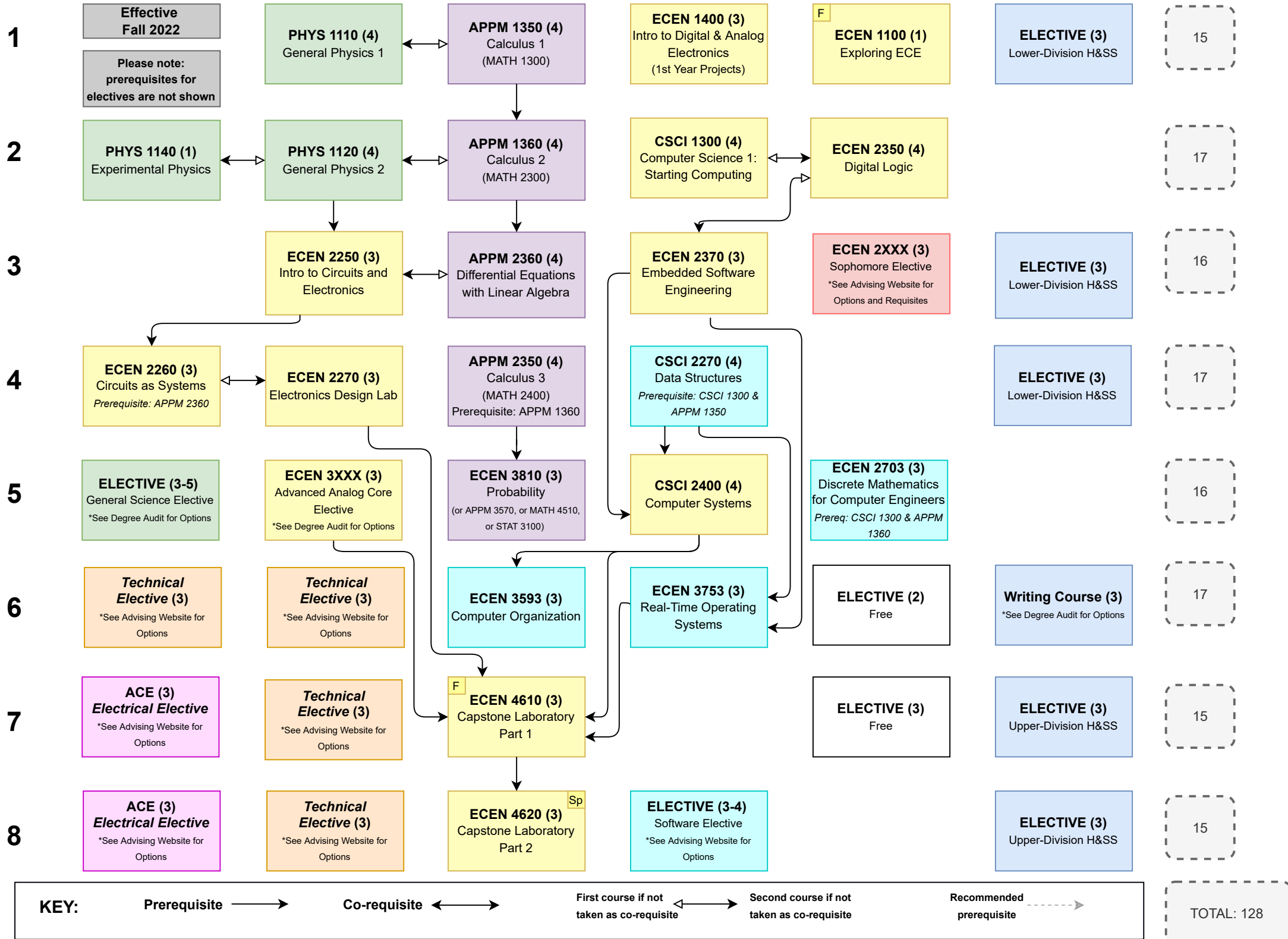


# ELECTRICAL & COMPUTER ENGINEERING CURRICULUM (4-Year Plan)

F Sp = Semester normally offered



Effective Fall 2022  
Please note: prerequisites for electives are not shown

**PHYS 1110 (4)**  
General Physics 1

**APPM 1350 (4)**  
Calculus 1  
(MATH 1300)

**ECEN 1400 (3)**  
Intro to Digital & Analog Electronics  
(1st Year Projects)

**ECEN 1100 (1)**  
Exploring ECE

**ELECTIVE (3)**  
Lower-Division H&SS

15

**PHYS 1140 (1)**  
Experimental Physics

**PHYS 1120 (4)**  
General Physics 2

**APPM 1360 (4)**  
Calculus 2  
(MATH 2300)

**CSCI 1300 (4)**  
Computer Science 1: Starting Computing

**ECEN 2350 (4)**  
Digital Logic

**ELECTIVE (3)**  
Lower-Division H&SS

17

**ECEN 2250 (3)**  
Intro to Circuits and Electronics

**APPM 2360 (4)**  
Differential Equations with Linear Algebra

**ECEN 2370 (3)**  
Embedded Software Engineering

**ECEN 2XXX (3)**  
Sophomore Elective  
\*See Advising Website for Options and Requisites

**ELECTIVE (3)**  
Lower-Division H&SS

**ELECTIVE (3)**  
Lower-Division H&SS

16

**ECEN 2260 (3)**  
Circuits as Systems  
Prerequisite: APPM 2360

**ECEN 2270 (3)**  
Electronics Design Lab

**APPM 2350 (4)**  
Calculus 3  
(MATH 2400)  
Prerequisite: APPM 1360

**CSCI 2270 (4)**  
Data Structures  
Prerequisite: CSCI 1300 & APPM 1350

**ELECTIVE (3)**  
Lower-Division H&SS

**ELECTIVE (3)**  
Lower-Division H&SS

17

**ELECTIVE (3-5)**  
General Science Elective  
\*See Degree Audit for Options

**ECEN 3XXX (3)**  
Advanced Analog Core Elective  
\*See Degree Audit for Options

**ECEN 3810 (3)**  
Probability  
(or APPM 3570, or MATH 4510, or STAT 3100)

**CSCI 2400 (4)**  
Computer Systems

**ECEN 2703 (3)**  
Discrete Mathematics for Computer Engineers  
Prereq: CSCI 1300 & APPM 1360

**ELECTIVE (2)**  
Free

16

**Technical Elective (3)**  
\*See Advising Website for Options

**Technical Elective (3)**  
\*See Advising Website for Options

**ECEN 3593 (3)**  
Computer Organization

**ECEN 3753 (3)**  
Real-Time Operating Systems

**ELECTIVE (2)**  
Free

**Writing Course (3)**  
\*See Degree Audit for Options

17

**ACE (3) Electrical Elective**  
\*See Advising Website for Options

**Technical Elective (3)**  
\*See Advising Website for Options

**ECEN 4610 (3)**  
Capstone Laboratory Part 1

**ELECTIVE (3)**  
Free

**ELECTIVE (3)**  
Free

**ELECTIVE (3)**  
Upper-Division H&SS

15

**ACE (3) Electrical Elective**  
\*See Advising Website for Options

**Technical Elective (3)**  
\*See Advising Website for Options

**ECEN 4620 (3)**  
Capstone Laboratory Part 2

**ELECTIVE (3-4)**  
Software Elective  
\*See Advising Website for Options

**ELECTIVE (3)**  
Upper-Division H&SS

**ELECTIVE (3)**  
Upper-Division H&SS

15

**TOTAL: 128**